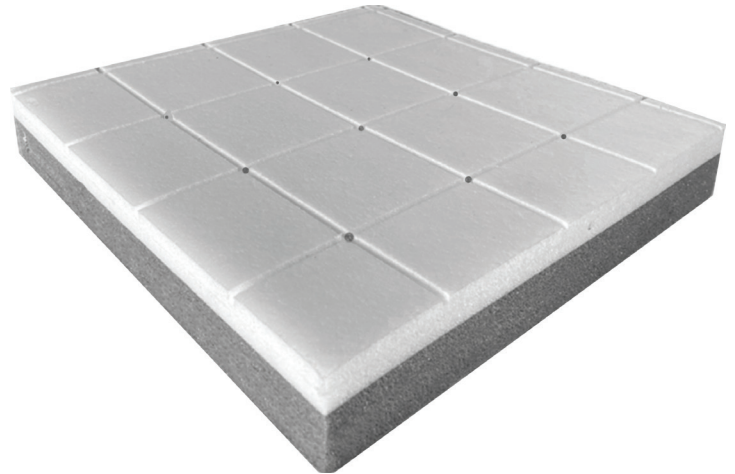


General Properties

- Turf Core pad is comprised of 100% closed cell polyethylene (PEX) and is a stratified new material composite.
- It is naturally resistant to chemical attack, UV, general decomposition and has a multi-generational life-span, extremely stable, and is 100% recyclable.



Physical Specifications

Thickness 2.0" +/- 1/16"

Weight per unit .53 lbs 1/sq ft

Drainage & Dimensional Stability

TEST RESULTS:

Condition	Warp		Fill		Diagonal		Diagonal	
	Change in Inches	% Change	Change in Inches	% Change	Changes in Inches	% Change	Changes in Inches	% Change
Water Immersion (Condition 1)	(+) 0.024"	(+) 0.133 %	(+)0.016"	(+)0.088 %	(+) 0.018"	(+) 0.070 %	(+) 0.025"	(+) 0.098 %
Frozen (Condition 2)	(-) 0.173"	(-) 0.958 %	(-)0.165"	(-) 0.910 %	(-) 0.210"	(-) 0.821 %	(-) 0.216"	(-) 0.849 %
Oven Dry (Condition 3)	(+) 0.099"	(+) 0.548 %	(+) 0.100"	(+) 0.552 %	(+) 0.129"	(+) 0.504 %	(+) 0.106"	(+) 0.417 %
70F 65% RH (Final)	(-) 0.057"	(-) 0.316 %	(-) 0.046"	(-) 0.254%	(-) 0.047"	(-) 0.184 %	(-) 0.070"	(-) 0.275 %

Water Permeability | 520 gal/min/sq yd | ASTM 1551

